

NUMMUS 11-12

ARTISTIC DIRECTOR, GLENN BUHR

SUMMARY OF THE NUMUS 2011-2012 SEASON

> Main Series

- 1. Manitoba Chamber Orchestra performs the music of Philip Glass**
Friday Sep. 16, 2011 - 8pm @ Maureen Forrester Recital Hall, Waterloo
- 2. Song of the Earth/Red Sea: Music by Gustav Mahler and Glenn Buhr**
Friday Oct. 7, 2011 - 8pm @ Maureen Forrester Recital Hall, Waterloo
- 3. Contemporary Concerti: WLU Symphony performs Pärt, Gorecki & Hatch**
Saturday, Nov. 26, 2011 - 8pm @ WLU Theatre Auditorium, Waterloo
- 4. Mad King: NUMUS Chamber Ensemble performs Berio, Schönberg & Davies**
Friday, Apr. 13, 2012 - 8pm @ Conrad Centre for the Performing Arts, Kitchener
- 5. The Element Choir: New Works for Improvisational Choir by Christine Duncan**
Saturday, May 5, 2012 - 8pm @ Knox Presbyterian Church, Waterloo

> Pop/Rock Avant Series: The Last 8 Beatles Albums LIVE

All concerts @ Conrad Centre for the Performing Arts, 36 King St. W., Kitchener

- | | |
|---|--|
| 1. Rubber Soul/Revolver
Friday, Oct. 21, 2011 - 8pm | 3. White Album(s)
Friday, Feb. 3, 2012 - 8pm |
| 2. Sergeant Pepper/Magical Mystery Tour
Friday, Nov. 18, 2011 - 8pm | 4. Let it Be/Abbey Road
Friday, Mar. 9, 2012 - 8pm |

> The Great Canadian Contemporary Jazz Summit

- 1. The Art of Miles Davis**
Thursday, Jan. 26, 2012 - 8pm @ the Jazz Room, 59 King Street North, Waterloo
- 2. Double Bill: Ebony Tower Trio & Random Access**
Friday, Jan. 27, 2012 @ the Jazz Room, 59 King Street North, Waterloo
8pm: Glenn Buhr's Ebony Tower Trio
10:30pm: Barry Romberg's Random Access
- 3. Double Bill: Neue Berlin Cabaret & Jason White Trio**
Saturday, Jan. 28, 2012 @ the Jazz Room, 59 King Street North, Waterloo
8pm: Neue Berlin Cabaret with Penderecki String Quartet & Patricia O'Callaghan
10:30pm: Late Night Show with Jason White Trio

> A Message from the Artistic Director

Welcome to the 2011-2012 season!

This season we travel great distances. From the sublime romanticism of **Gustav Mahler**, through the New York minimalist film music by **Philip Glass** performed by the **Manitoba Chamber Orchestra**, to the wonderful and wild improvisations of the **Element Choir**, directed by vocal virtuoso **Christine Duncan**.

And we present an array of new talent: baritone **Tyler Fitzgerald** makes his NUMUS debut in **Peter Maxwell Davies' Eight Songs for a Mad King**; rock singer **Pete Oldrige** performs **the Beatles'** most progressive music with his band **The Urban Monks**; pop singer **Sarah Slean** performs my own *Red Sea*, a tragic cycle of songs depicting our suffering earth; and cabaret star **Patricia O'Callaghan** performs songs by **Kurt Weill** and **Eric Satie** with the **Penderecki String Quartet**.

We're presenting twelve shows over three series this year: Main Series, Pop/Rock Avant Series and The Great Canadian Contemporary Jazz Summit.

Subscribing is simple. Just choose the concerts you want to attend — any collection of concerts from any series, in any combination — and we'll give you a discount based on the number of concerts that you choose.

So please join us in the journey.



Glenn Buhr,
Artistic Director/General Manager

Sponsored by:



Canadian
Heritage

Patrimoine
canadien



Canada Council
for the Arts

Conseil des Arts
du Canada



ONTARIO ARTS COUNCIL
CONSEIL DES ARTS DE L'ONTARIO

MAIN SERIES (5 CONCERTS)



Philip Glass

I. THE MANITOBA CHAMBER ORCHESTRA PERFORMS THE FILM MUSIC OF PHILIP GLASS

with **Anne Manson**, conductor and **Michael Riesman**, piano

Friday, September 16, 2011 - 8pm

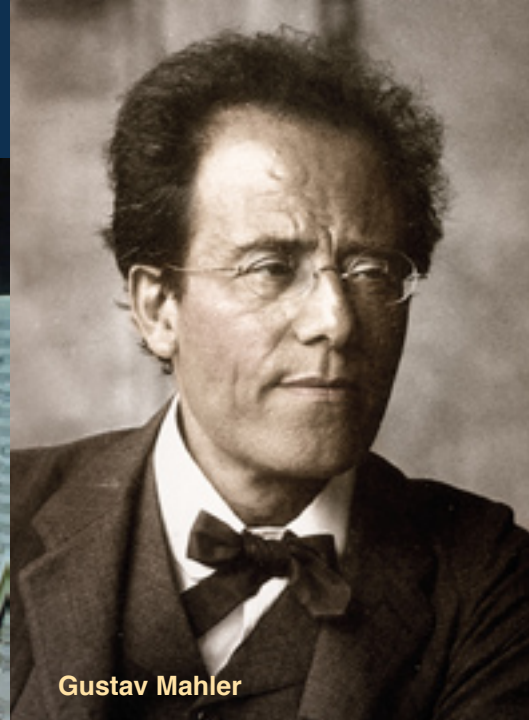
Maureen Forrester Recital Hall, Wilfrid Laurier University

NUMUS is proud to present the **Manitoba Chamber Orchestra**. On tour, and performing recent music by **Philip Glass**, the MCO is preparing for a recording of Glass's new Piano Concerto based on the music from the film *The Hours*. **Michael Riesman** - long time member of the Philip Glass Ensemble - performs the new concerto with the MCO.

The MCO also performs Glass's Symphony no. 3 and his 2007 score for the 1931 film *Dracula*.

Tickets:

\$38 general / \$32 senior / \$24 (for patrons under 29) / \$10 Student (rush only)



Gustav Mahler



Sarah Slean

2. SONG OF EARTH Mahler: *Das Lied von der Erde* (1908) Buhr: *Red Sea (Song of the Earth)* (2010)

with the **NUMUS Chamber Orchestra** conducted by **Paul Pulford**

featuring **Sarah Slean**, mezzo-soprano

Adam Luther, tenor

Kimberly Barber, mezzo-soprano

The Penderecki String Quartet

Friday, October 7, 2011 - 8pm

Maureen Forrester Recital Hall, Wilfrid Laurier University

NUMUS - in association with the Faculty of Music at Wilfrid Laurier University and the Penderecki String Quartet - celebrates **Gustav Mahler** 100 years after his death. The turn-of-the-century progressives adored Mahler's music, and 12-tone pioneer **Arnold Schönberg** created this colourful arrangement of Mahler's masterpiece *Das Lied von der Erde* for a performance in his own concert series.

Glenn Buhr's new work was written to complement Mahler's *Song of the Earth*, but it takes a different twist. It's a tragic work about our suffering earth. The libretto was written by **Margaret Sweatman** in 2010 when oil was spewing into the Gulf of Mexico. Many said that the earth was 'bleeding', hence the title of the new work: *Red Sea (Song of the Earth)*. Pop singer **Sarah Slean** is the soloist.

Tickets:

\$38 general / \$32 senior / \$24 (for patrons under 29) / \$10 Student (rush only)



3. CONTEMPORARY CONCERTI

performed by the **WLU Symphony Orchestra** conducted by **Paul Pulford**
with soloists **Kathryn Ladano**, bass clarinet
Jeremy Bell & Jerzy Kaplanek, violins
Glenn Buhr, piano
Elaine Lau & Joseph Ferretti, piano duo
James Mason, oboe

Saturday, November 26 2011 - 8pm
Theatre Auditorium, Wilfrid Laurier University

Programme:

Arvo Pärt: *Tabula Rasa*
Curtis Wright: *Polaris* (world premiere)*
Peter Scartabello: *Bass Clarinet Concerto* (world premiere)
Henryk Gorecki: *Piano Concerto*
Akira Nishimura: *Heterophony for Two Pianos and Orchestra*
Peter Hatch: *Undr*

NUMUS joins with the **Wilfrid Laurier University Symphony Orchestra** for a show that features a stellar collection of virtuoso instrumentalists performing major recent works for soloists with orchestra.

Tickets:

\$24 general / \$20 senior / \$15 (for patrons under 29) / \$10 Student



4. EIGHT SONGS FOR A MAD KING

performed by the **NUMUS Chamber Ensemble** conducted by **Glenn Buhr**
with soloists **Kimberly Barber**, mezzo-soprano
Tyler Fitzgerald, baritone (as the mad King George III)

Friday, April 13 2012 - 8pm
Conrad Centre for the Performing Arts, Kitchener

Programme:

Peter Maxwell Davies: *Eight Songs for a Mad King*
Kouros Ghamsari-Esfahani: *Masks* (world premiere)*
Arnold Schönberg: *Chamber Symphony op. 9*
Luciano Berio: *O King*

NUMUS presents **Peter Maxwell Davies'** seminal work *Eight Songs for a Mad King* with baritone **Tyler Fitzgerald*** in his debut as the mad King George III. With the musicians trapped in their birdcages, they listen and perform as the good king rants/wails/whispers/sings/shrieks, trying to coax them to learn his songs. A wonderful avant-garde cult masterpiece from the late 60's.

Tickets:

\$30 general / \$24 senior / \$18 (for patrons under 29) / \$10 Student (rush only)

*part of NUMUS' Generation Z initiative to support young contemporary music professionals



5. THE ELEMENT CHOIR: NEW WORKS FOR IMPROVISATIONAL CHOIR

Directed by **Christine Duncan**

Saturday, May 5, 2012 - 8pm
Knox United Church, 50 Erb St. W. at Caroline

Modern vocal virtuoso **Christine Duncan** conducts 3 KW choirs brought together by **Lee Willingham**, Director of the Laurier Centre for Music in the Community.

The Element Choir draws singers from a broad spectrum of styles, from concert sopranos to singer songwriters to sound poets to Japanese folk singers, composers and musicians. They explore textural and timbral sound qualities, soundscapes, rhythmic patterns, sound poetry, musical genre interplay and extended voice techniques.

also featuring:

Jean Martin, percussion

William Parker, bass

Jim Lewis, trumpet

Eric Robertson, cassavant pipe organ

www.barnyardrecords.com

Tickets:

\$30 general / \$24 senior / \$18 (for patrons under 29) / \$10 Student (rush only)



MAIN SERIES SUMMARY

1. The Music of Philip Glass

The **Manitoba Chamber Orchestra** conducted by **Anne Manson**

Friday, September 16, 2011 - 8pm

Maureen Forrester Recital Hall, Waterloo

\$38 general / \$32 senior / \$24 (for patrons under 29) / \$10 Student (rush only)*

2. Song of the Earth / Red Sea

The **NUMUS Chamber Orchestra** performs **Mahler's *Das Lied von der Erde*** and **Glenn Buhr's *Red Sea***

Friday October 7, 2011 - 8pm

Maureen Forrester Recital Hall, Waterloo

\$38 general / \$32 senior / \$24 (for patrons under 29) / \$10 Student (rush only)*

3. Contemporary Concerti

The **WLU Symphony Orchestra** conducted by **Paul Pulford**

Saturday, November 26, 2011 - 8pm

Theatre Auditorium, Wilfrid Laurier University

\$24 general / \$20 senior / \$15 (for patrons under 29) / \$10 Student**

4. Eight Songs for a Mad King

The **NUMUS Chamber Ensemble** performs **Peter Maxwell Davies' *Eight Songs for a Mad King***

Friday, April 13, 2012 - 8pm

Conrad Centre of the Performing Arts, Kitchener

\$30 general / \$24 senior / \$18 (for patrons under 29) / \$10 Student (rush only)*

5. The Element Choir

Directed by **Christine Duncan**: New works for Improvisational Choir

Saturday, May 5, 2012 - 8pm

Knox United Church, 50 Erb St. W. at Caroline

\$30 general / \$24 senior / \$18 (for patrons under 29) / \$10 Student (rush only)*

*Subscribers discounts are available from 10% to 40% off. See back page for details

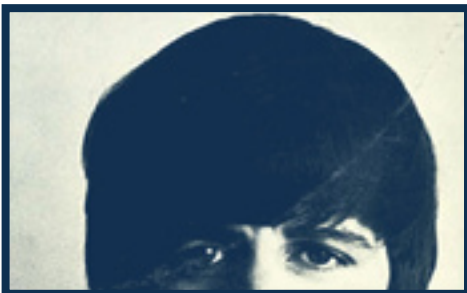
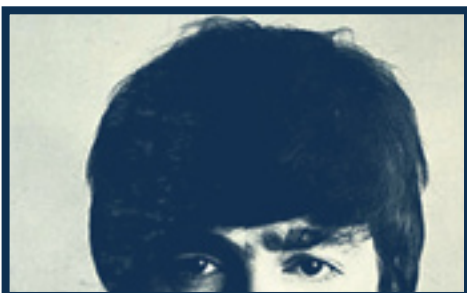


POP/ROCK AVANT SERIES: THE LAST 8 BEATLES ALBUMS LIVE (4 CONCERTS)

featuring **Pete Oldridge** and **The Urban Monks**

with **Lukas Bouda**, lead guitar & sitar

and members of **The NUMUS Chamber Orchestra**



The Beatles were master songwriters, curious artists, deep listeners and powerful musicians. They blurred the boundaries between pop music and art music, and became one of the most influential creative musical ensembles in history.

Brilliant vocalist **Pete Oldridge** and his band **The Urban Monks** join members of the **NUMUS Chamber Orchestra** to recreate their greatest work.

**All concerts at the Conrad Centre for the Performing Arts
36 King Street West, Kitchener**

Concert 1

Friday, October 21, 2011 - 8pm

Act 1: Rubber Soul

Act 2: Revolver

Concert 2

Friday, November 18, 2011 - 8pm

Act 1: Sergeant Pepper's Lonely Hearts Club Band

Act 2: Magical Mystery Tour

Concert 3

Friday, February 3, 2012 - 8pm

Act 1: White Album 1

Act 2: White Album 2

Concert 4

Friday, March 9, 2012 - 8pm

Act 1: Let it Be

Act 2: Abbey Road

Tickets (per concert):

\$35 general / \$30 senior / \$10 Student (rush only)*

*Subscribers discounts are available from 10% to 40% off. See back page for details

THE GREAT CANADIAN CONTEMPORARY JAZZ SUMMIT (3 NIGHTS - 5 BANDS)

All Concerts at the Jazz Room, 59 King Street North, Waterloo
(The Kent Lounge in the Huether Hotel)



Miles Davis

1. THE ART OF MILES DAVIS

featuring **Larry Larson**, trumpet
with **Sundar Viswanathan**, alto saxophone
Dave Wiffen, tenor saxophone
Andrew Downing, bass
Glenn Buhr, piano

Thursday, January 26, 2012 - 8pm

Miles Davis was the essential jazz icon. One of the most stylish of the jazz giants, Davis was always in the avant-garde of jazz, from his remixes of popular tunes like *Bye Bye Blackbird* to his fifties and sixties cool jazz ensembles and the electric fusion of his later period. This concert – featuring KW Symphony’s principal trumpeter, **Larry Larson** – explores the entire creative legacy of Miles Davis.

Tickets:

\$20 general / \$18 senior / \$8 Student*



2. DOUBLE BILL - THE EBONY TOWER TRIO & THE RANDOM ACCESS QUINTET

The Ebony Tower Trio
with **Glenn Buhr**, keyboards
Rich Brown, bass
Anthony Michelli, drums

The Random Access Quintet
with **Barry Romberg**, drums
Rich Brown, bass
Geoff Young, guitar
Kelly Jefferson, saxophone
Ravi Nampally, tabla

Friday, January 27, 2012

8pm: **Glenn Buhr's Ebony Tower Trio** comes to KW for a return engagement after their highly successful show last season with the Penderecki String Quartet.

10:30pm: For the late night show, Juno Award winning drummer **Barry Romberg** brings the edgy sound of his **Random Access Quintet** to KW. Romberg's credits read like a who's-who of contemporary jazz giants – from Gil Evans to Hank Jones to Rob McConnell and the Shuffle Demons.

NUMUS Jam Session begins at midnight, no admission charge after 11:30.

Tickets:

Both shows: \$24 general / \$20 senior / \$10 Student (half price for late show only)*

*Subscribers discounts are available from 10% to 40% off. See back page for details



Patricia O'Callaghan



Jason White

3. DOUBLE BILL - NEUE BERLIN CABARET & THE JASON WHITE TRIO

The Penderecki String Quartet with Patricia O'Callaghan, vocals

The Jason White Trio with Jason White, piano
Joe Ryan, drums
Paul Van Dyk, bass

Saturday January 28, 2012

8pm: Giving a nod to Kitchener's "New Berlin" history, this show revisits the cabaret scene of 1930s Berlin. Popular cabaret singer **Patricia O'Callaghan** and the **Penderecki String Quartet** perform songs by Kurt Weill along with tunes made famous by Marlene Deitrich during World War II.

The PSQ also performs the world premiere of a new string quartet by Kitchener native **Marc Sabat**. Sabat has been living in Berlin since 1993. His music extols the uncompromising avant-garde aesthetic of modern Berlin.

10:30pm: Composer and progressive jazz artist **Jason White** brings the unique sound of his new trio to The Jazz Room. The trio performs recent new work as well as breakdowns and remixes of classics by **Thelonious Monk**, **Frank Zappa** and others.

NUMUS Jam Session starts at midnight, no admission charge after 11:30.

Tickets:

\$24 general / \$20 senior / \$10 Student (half price for late show only)*

*Subscribers discounts are available from 10% to 40% off. See back page for details

THE NEW NUMUS MIX AND MATCH SUBSCRIPTION

Subscribing is simple and flexible. Simply choose the concerts you want to attend – in any series or combination of series – and receive your discount depending on the number of concerts you choose.*

- Any 4 - 5 concerts: 10% off general admission price
 - Any 6 - 7 concerts: 15% off general admission price
 - Any 8 - 9 concerts: 20% off general admission price
 - Any 10 - 11 concerts: 25% off general admission price
 - All 12 concerts: 35% off general admission price
- + an additional 5% discount if you order your subscription before June 15, 2011

To order, see contact information on the back cover.

> **Main Series**

1. Manitoba Chamber Orchestra performs the music of Philip Glass
\$38 general / \$32 senior / \$24 (for patrons under 29) / \$10 student (rush only)**
2. Song of the Earth/Red Sea: Music by Gustav Mahler and Glenn Buhr
\$38 general / \$32 senior / \$24 (for patrons under 29) / \$10 student (rush only)**
3. Contemporary Concerti: WLU Symphony performs Pärt, Gorecki & Hatch
\$24 general / \$20 senior / \$15 (for patrons under 29) / \$10 student**
4. Eight Songs for a Mad King performed by the NUMUS Chamber Ensemble
\$30 general / \$24 senior / \$18 (for patrons under 29) / \$10 student (rush only)**
5. The Element Choir: New Works for Improvisational Choir by Christine Duncan
\$30 general / \$24 senior / \$18 (for patrons under 29) / \$10 student

> **Pop/Rock Avant Series: The Last 8 Beatles Albums LIVE**

All Concerts: \$35 general / \$30 senior / \$10 Student (rush only)**

- | | |
|---|-------------------------|
| 1. Rubber Soul/Revolver | 3. White Album(s) |
| 2. Sergeant Pepper/Magical Mystery Tour | 4. Let it Be/Abbey Road |

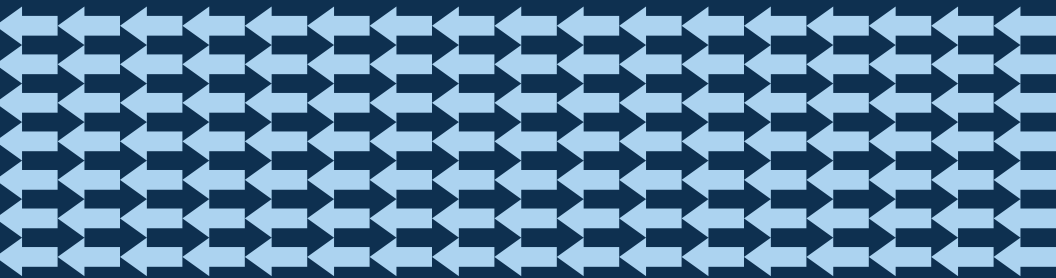
> **The Great Canadian Contemporary Jazz Summit**

1. The Art of Miles Davis with Larry Larson
\$20 general / \$18 senior / \$8 student
2. Double Bill: The Ebony Tower Trio & Barry Romberg's Random Access***
\$24 general / \$20 senior / \$10 student
3. Double Bill: Patricia O'Callaghan with the Penderecki String Quartet & The Jason White Trio***
\$24 general / \$20 senior / \$10 student

*Subscriptions are available for general and senior admissions only.

**Student rush tickets are available at the door a half hour prior to the performance.

***Jazz double bills count as one show in subscriptions.



To Order Tickets & Subscriptions:

By mail:

NUMUS Concerts
P.O. Box 38040
256 King Street North
Waterloo, Ontario
N2J 4T9

By email:

info@numus.on.ca

By telephone:

519.896.3662

WWW.NUMUS.ON.CA